

OBECO GLASS BLOCKS

DIY INSTRUCTION SHEET



STEP 1

Install the frame securely into the opening using nylon anchors or similar simple fixings about every 400mm up the jambs. The frame must be plumb, level and squared.



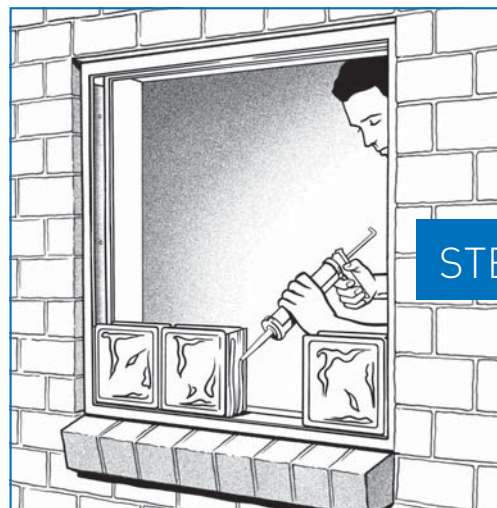
STEP 2

You have a number of long PVC strips the width of the frame and these sit under each course. Take one of these PVC strips and apply a thin bead of silicone down the shoulders of one side, then stick it to the frame at the bottom. Similarly, run silicone along the top to accept the first course of glass blocks. It does not matter which way around the PVC sits. Be tidy with silicone – wipe off any mess straight away.



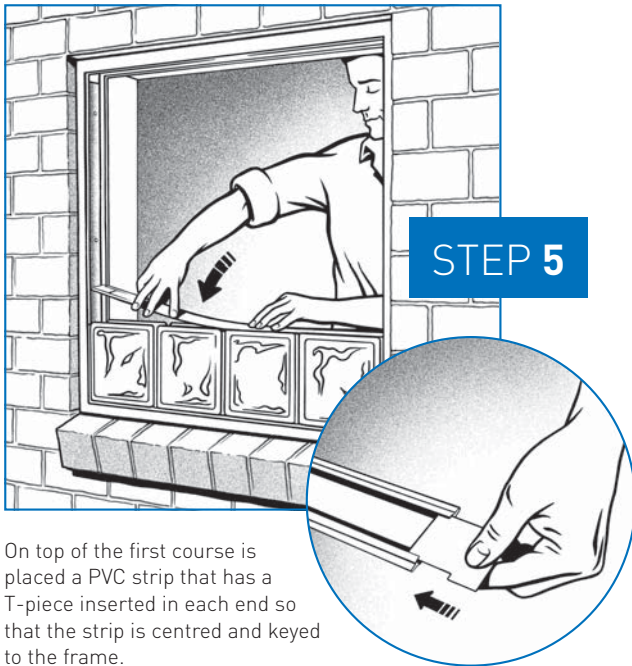
STEP 3

You have also a number of short PVC infills the height of a glass block and these are used in the vertical joints between the blocks and at the perimeter between the blocks and the frame. Again the silicone is run down the shoulder edges of the PVC strips both sides so that the areas that touch the glass blocks or the frame have silicone to connect.



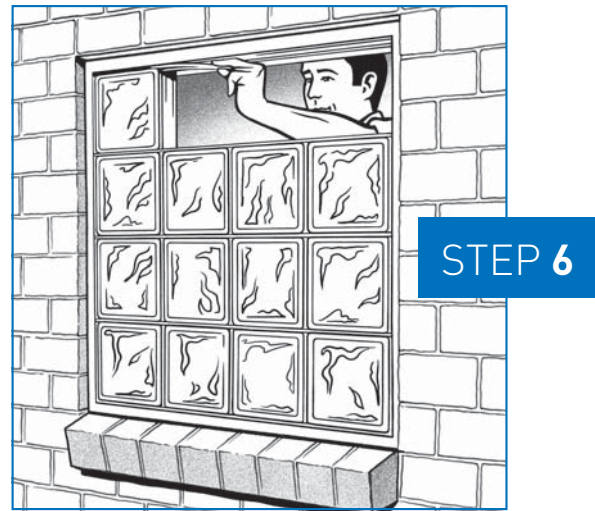
STEP 4

Once the bottom PVC strip and side PVC infills are stuck to the frame and silicone is on the inside of the PVC strips then you can start laying the glass blocks. Start at the bottom corners and work towards the middle of each course. Keep to the principle that all surfaces that come into contact have silicone so they stick together.



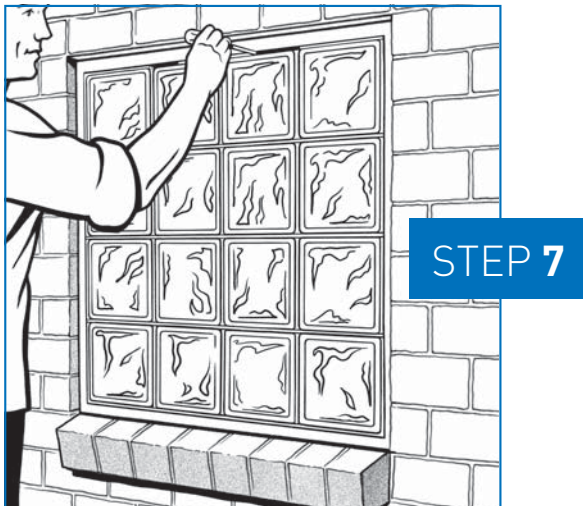
STEP 5

On top of the first course is placed a PVC strip that has a T-piece inserted in each end so that the strip is centred and keyed to the frame.



STEP 6

Continue to lay up to the top row where you again work from the sides towards the last glass block in the middle. In the last course a siliconed PVC infill is slid along between the frame and the top of each block as it is laid.



STEP 7

The last block does without one side having a PVC infill, insert a thin tip of the silicone gun and put a blob of silicone into the centre of the void. In the top joint, slide the PVC infill from the top of the neighbouring blocks so they are shared (using a screwdriver for example). Check the alignment of the blocks and tap flush if necessary then allow a few hours for the silicone to cure.



STEP 8

Grout the same as for tiles making sure you fill all the voids and compress the grout tightly in the joint. Clean off the excess grout with a damp sponge. Rinse the sponge continually so that any grit will not scratch the faces of the blocks. Squeeze the water out of the sponge so that the grout is not washed out. Leave to dry and then dust off with a cloth. Now enjoy your handiwork.

WHAT YOU HAVE IN YOUR KIT:

- Glass blocks** – as selected
- Aluminium frame** – powder coated or anodised in selected colour
- PVC strips** – one for each horizontal bed joint
- T piece ends** – one in each end of the PVC strips [except top and bottom]
- PVC infills** – for every vertical joint
- Silicone** – 300g cartridges
- Grout** – specially made White sanded grout
- Premix** – waterproofing grout admixture